

What's new in the epilepsy world

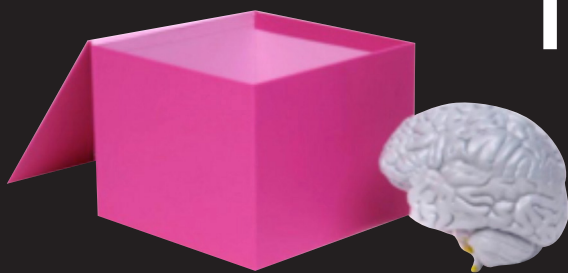
Thursday 26 October 2017

10:00am – 5:00pm

(Registration from 9:00am)

Venue: Russell Strong Auditorium  
Princess Alexandra Hospital - Woolloongabba

Eighth Annual  
**Queensland Epilepsy  
Symposium**



Thinking  
**outside**  
the **BOX!**

Join us for some stimulating dialogue...

**Stereo - EEG: Finding hope in the depths of the brain**

---

**Genetic testing for focal epilepsy**

---

**Epilepsy and Spirituality**

---

**Emerging Drugs**

---



Sponsored by:



Kindly printed by: **TERRIBUTLER<sup>MP</sup>**  
*A strong voice for our future*

[www.epilepsyqueensland.com.au](http://www.epilepsyqueensland.com.au)

## Thursday 26 October 2017

<b>9:00 am - 9:45am</b>	<b>Registration</b>	Morning tea on arrival
<b>9:45am - 10:00am</b>	<b>Welcome</b>	David Bunker, Executive Director, Queensland Genomics Health Alliance and Director, Epilepsy Queensland
<b>10:00am - 11:00am</b>	<b>Stereo - EEG: Finding hope in the depths of the brain</b>	Dr Sasha Dionisio Director Advanced Epilepsy Unit Mater Centre for Neurosciences
<b>11:00am - 12:00 pm</b>	<b>Genetic testing for focal epilepsy: Ready for prime time</b>	Dr Piero Perucca Dept. of Medicine & Neurology The Royal Melbourne Hospital & The University of Melbourne
<b>12:00am - 12:45 pm</b>	<b>'What is the cause of my epilepsy'</b>	A/Prof Lata Vadlamudi Senior Staff Specialist Neurology, RBWH, Principal Research Fellow UQ Centre for Clinical Research
<b>12:45pm - 1:30pm</b>	<b>Lunch</b>	
<b>1:30pm - 2:15pm</b>	<b>Non-epileptic seizure like events: The differential diagnosis of epilepsy</b>	Prof Harry McConnell Professor of Neurosychiatry and Neurodisability Gold Coast District Health Services and Griffith University School of Medicine
<b>2:15pm - 3:00pm</b>	<b>Non-epileptic seizures: Not "all in the head"</b>	Dr Rian Dob Neuro-psychologist Neurology Outpatient Dept. Mater Health Services
<b>3:00pm - 3:30pm</b>	<b>Medicinal Cannabis for childhood epilepsy: Current issues and an update on PELICAN Study</b>	Ruth Blackburn Psychologist at The University of Sydney
<b>3:30pm - 4:00pm</b>	<b>Emerging drugs</b>	Dr Dan McLaughlin Neurologist
<b>4:00pm - 4:20pm</b>	<b>Epilepsy and Spirituality</b>	Assoc. Professor Cecilie Lander Neurologist & Epiloptologist
<b>4:20pm - 5:00pm</b>	<b>NDIS and epilepsy</b>	Leonie Hogarth Epilepsy Queensland Services Development Officer
<b>5:00pm</b>	<b>Close</b>	

